



STREAMS[®]

Truck Rest Area Vacancy Information feature

Supporting
safer road journeys
with **STREAMS**[®]

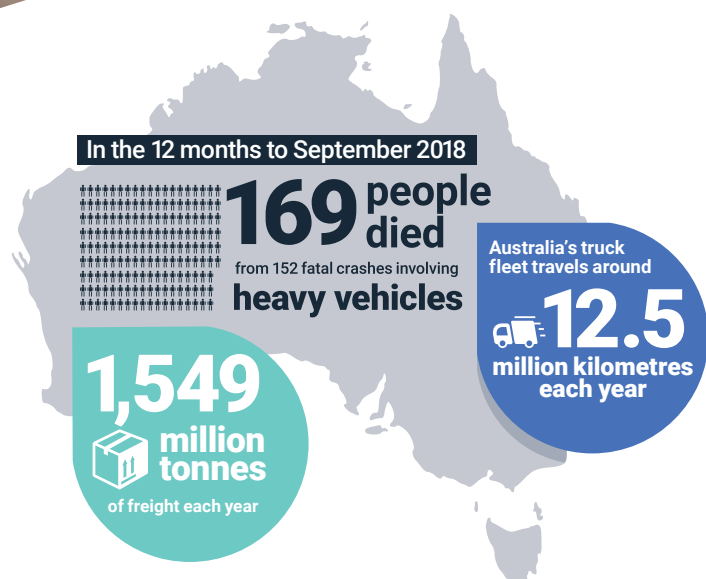
STREAMS[®] Truck Rest Area Vacancy Information feature

The trucking industry plays an important role in the overall economy of the country. Australia's truck fleet travels around 12.5 million kilometres and transports some 1,549 million tonnes of freight each year.

Unfortunately, trucks are also over-represented in fatal crashes. During the 12 months to end-September 2018, 169 people died from 152 fatal crashes involving heavy vehicles.

Truck drivers in Australia need safe access to available and convenient parking rest area. If truck drivers can't easily access an available truck rest area, they may be forced to park illegally or unsafely.

Where fatigue is reported to be one of the common causes of fatal road accidents in Australia, it is vital truck drivers can better plan their journeys including easily accessing available rest areas.



STREAMS[®] solution

Transmax's Unified STREAMS Program (USP) brought together all customer versions of STREAMS. As a result, customers on the STREAMS 13-series can access a Truck Rest Area Vacancy Information feature, which provides parking guidance information.

How does the feature work?

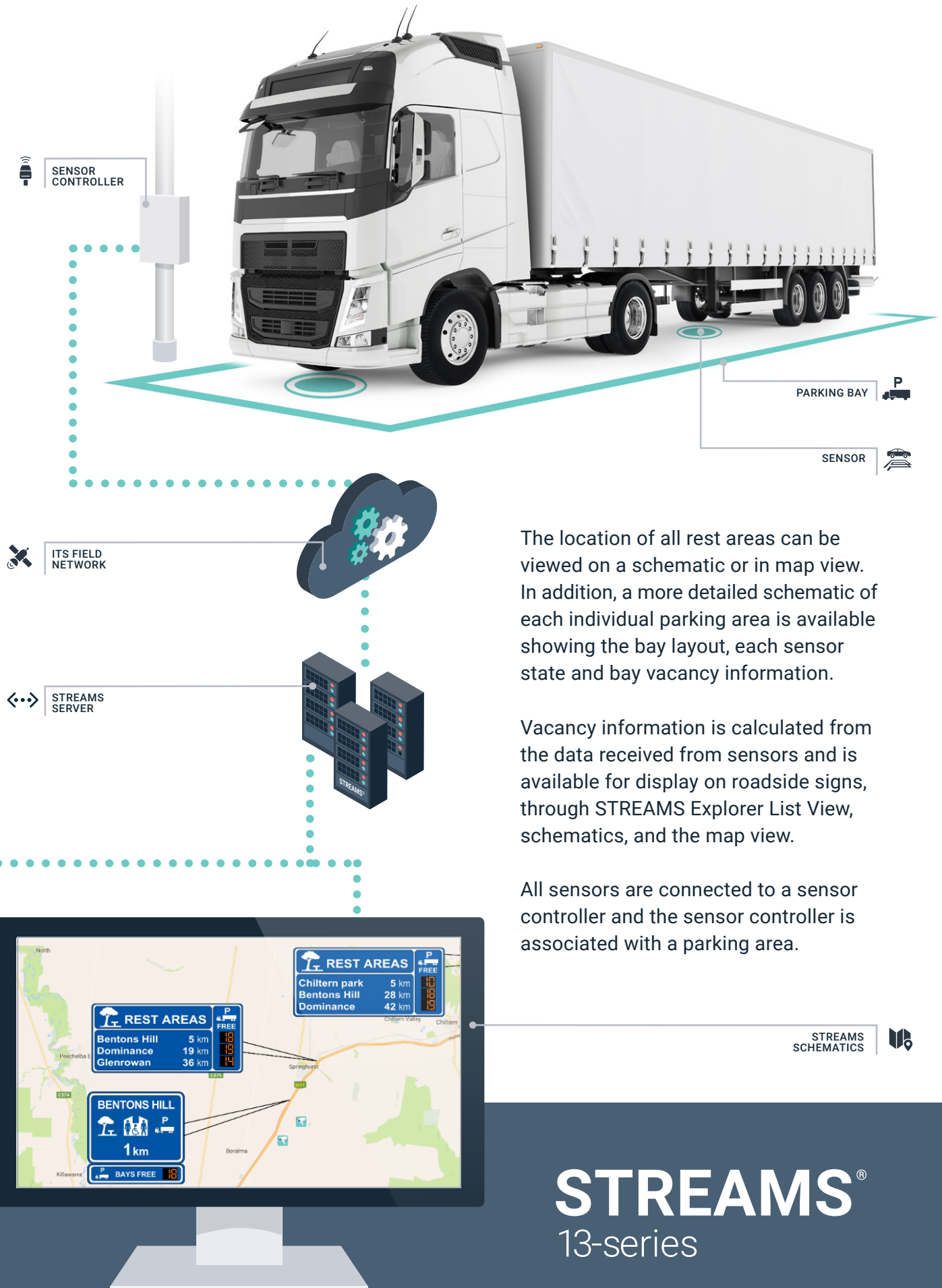


This feature calculates and publishes vacancy information for rest areas on dynamic message signs to assist truck drivers in planning their journey and complying with mandatory fatigue management.



A rest area comprises individual parking bays, each of which have one or more sensors to determine whether the bay is partially occupied, fully occupied or vacant.

STREAMS Explorer allows the creation and maintenance of a rest area, its associated parking bays, and the necessary devices to determine the number of vacant bays in each rest area.



The location of all rest areas can be viewed on a schematic or in map view. In addition, a more detailed schematic of each individual parking area is available showing the bay layout, each sensor state and bay vacancy information.

Vacancy information is calculated from the data received from sensors and is available for display on roadside signs, through STREAMS Explorer List View, schematics, and the map view.

All sensors are connected to a sensor controller and the sensor controller is associated with a parking area.

STREAMS®

13-series

Customer use of feature

Transmax initially developed this feature with VicRoads to mitigate the risks presented by truck driver fatigue through the provision of current and accurate parking information on the Hume Highway in Victoria.

The aim of developing this STREAMS feature was to enable VicRoads to:

- ✓ reduce the number of fatal crashes caused by truck driver fatigue
- ✓ increase road safety for all Victorians on freeways
- ✓ increase economic efficiency for commercial freights travelling to Melbourne
- ✓ minimise costs associated with truck incidents

Feature benefits

With the employment of the STREAMS Truck Rest Area Vacancy information feature, truck drivers are guided on where parking is available. This assists drivers to make safer, smarter parking decisions.

In addition, this feature:

- ✓ supports fatigue management initiatives
- ✓ can improve safety outcomes for all road users
- ✓ promotes Towards Zero road safety goals

This feature could also assist commercial freight companies in improving their compliance with driving regulations and by providing better data for route planning.

To find out more about this feature, get in touch with your Transmax account manager or contact Transmax on 07 3355 8700 or email info@transmax.com.au

Our Consulting Services team will work with you to implement the feature.







About Transmax

Transmax is the solutions provider of the international award-winning ITS platform STREAMS. We exist to improve people's lives by providing industry-leading transport solutions and help move millions of commuters around Australian road networks every day.

STREAMS was first developed as part of Queensland's Department of Transport and now, as a government-owned entity, Transmax supports other transport departments around Australia and internationally to achieve safer and more reliable road journeys for people in the communities they serve.

Contact Us

 **Transmax Pty Ltd**
Level 5, 143 Coronation Drive
Milton Queensland 4064
Australia

 **+61 7 3355 8700**
 **info@transmax.com.au**
 **www.transmax.com**

We place our customers at the centre of everything we do and work collaboratively to ensure our ITS solutions meet their needs. Transmax offers customers systems engineering, software design and development, along with a range of consulting and support services throughout the entire ITS lifecycle.

With 50 years of ITS experience, we help our customers realise the community benefits of optimising transport networks by providing smarter, more sustainable ITS solutions.



+ 61 7 3355 8700

info@transmax.com.au

Transmax Pty Ltd
Level 5 / 143 Coronation Drive
Milton QLD 4064, Brisbane Australia

www.transmax.com.au

The background of the lower half of the page is a photograph of a road at sunset. The sun is low on the horizon, creating a warm orange glow. The road is dark asphalt with white lane markings. In the distance, there are some buildings and trees. The image is overlaid with large, semi-transparent geometric shapes in shades of orange and teal.

Supporting
safer road journeys
with **STREAMS**[®]